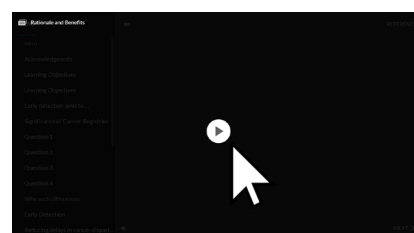




HOW TO NAVIGATE THE ONLINE LEARNING MODULES

1 Get started

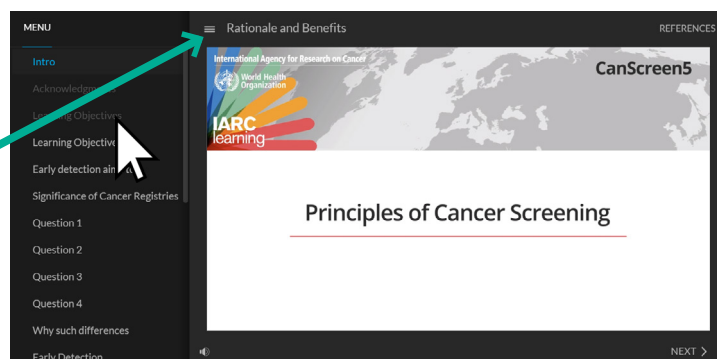
Click on the triangular play icon to start the module



2 Navigate between slides with the menu bar on the left

You can click on the listed titles of the slides to jump to a specific slide

this menu icon allows you to open or close the side menu bar



3 Use the icons at the bottom of the screen

You can adjust the volume, turn on subtitles, pause the video, restart the video, and navigate to the previous and next slides



volume icon to turn the volume up or down

CC icon to turn on and off closed captions

play icon to pause or resume the video

progress bar

replay button to rewatch the video

go to previous slide

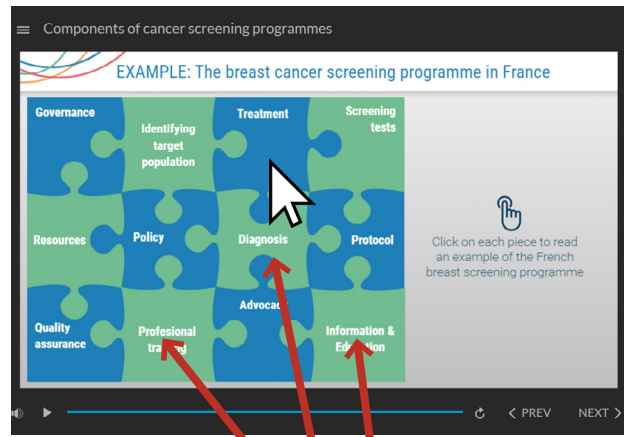
go to next slide

4 Interact

Some slides are interactive. You will be able to click on elements to access and listen to more information.



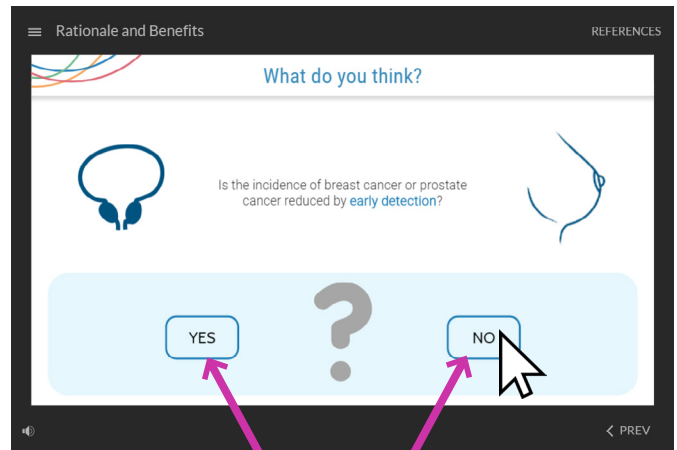
A text and icon will let you know when a slide is interactive and which elements can be clicked.



Example of a slide with numerous clickable elements

5 Select answers

Some slides are questions for you to answer. You will be able to select answers such as True or False.



Example of a true or false question where you have to choose an answer

6 View lists of references

The reference button on the top-right of the screen gives you access to a list of resources and references used for the module. You will be able to click on them and get more information on specific topics of your choice.

